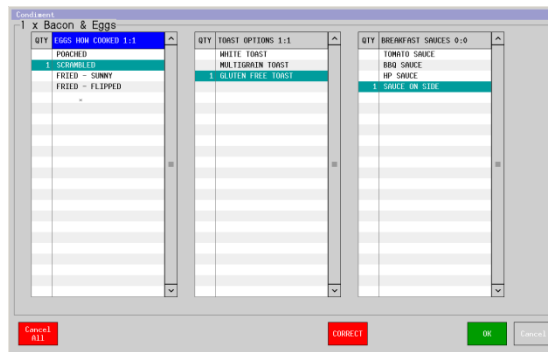


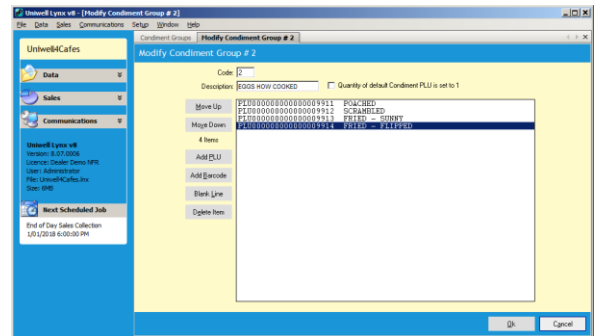
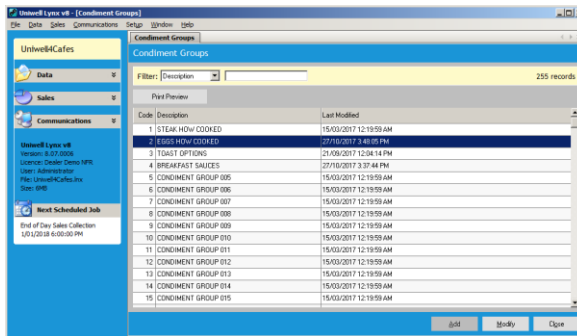
Topic: **CONDIMENT GROUPS**

Condiment Groups are a feature in Uniwell POS terminals that allow a main item to open up a series of related selections. For instance, 'Bacon & Eggs' can be linked to several Condiment Groups, including 'Eggs How Cooked?', 'Toast Options' & 'Sauces'.



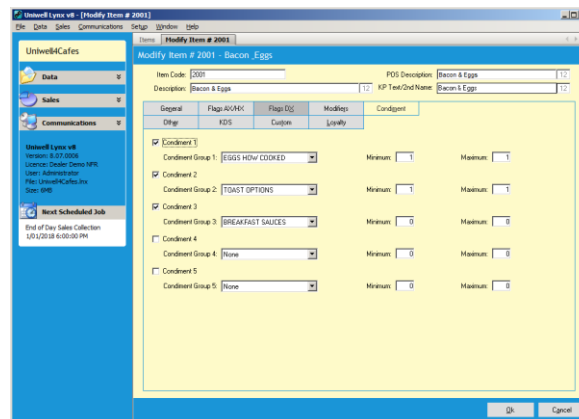
FAQ: What do I need to set up to create a Condiment Group?

1. You need to create the Items (with PLU numbers) in Uniwell Lynx that you want as the options in the Condiment Group. It is a good idea to enter these in sequential order so that they are easy to find and manage
2. You then create the Condiment Group itself by going to the Data > Condiment Groups screen. Modify an unused Condiment Group (or Add a new one if necessary), and Add the PLUs you've created to that Condiment Group. You can modify the order of items within the Condiment Group as required



FAQ: How do I link Condiment Groups to an item so that the options appear on the POS screen when the item is ordered?

- Go to the Item grid, select the main item you want to add condiment selections to (in this example 'Bacon & Eggs') and press Modify
- Select the 'Condiment' tab of the screen, and enable and choose up to 5 Condiment Groups. You can also set minimum & maximum selections for each selected Condiment Group



FAQ: Now that the Condiment Group has been created and linked to appropriate items, how to I send it to the POS?

- Go to the Communications menu > Send Program, and send PLUs and Condiment Groups to the POS