

Topic: **SELLING PRICE LEVELS**

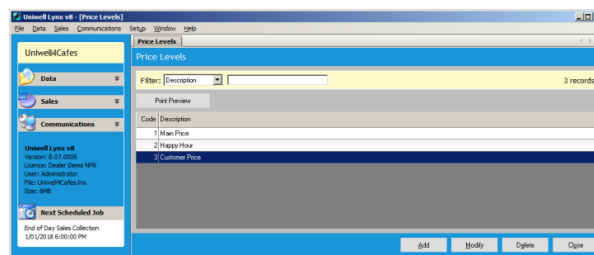
Uniwell Lynx can be set up with different sets of selling prices for Items within the database that suit the locations and configuration of POS Terminals within your venue. This tutorial explains the basic usages of this feature and how it can be set up and maintained.

FAQ: Under what circumstances would I use multiple Price Levels?

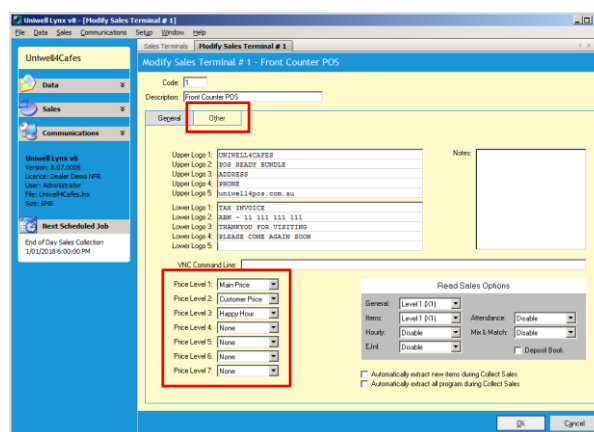
- Uniwell AX / HX model POS terminals allow items to have up to 7 ‘standard prices’ for PLUs
- You may have a default selling price and a different, discounted price for ‘members’ or ‘account customers’ – Uniwell POS terminals can be set to trigger a Price Level change when a Customer is associated with a sale
- Selling price levels can also be used promotionally – Uniwell POS terminals have a ‘Price Level Time’ feature that can automatically switch to different price levels on a schedule (for instance – “Happy Hour”)
- Another scenario could be a venue with various rooms/locations. Items may be sold for different prices depending on the location and the POS terminals need to reflect this situation

FAQ: How do I set up a different Selling Price Levels?

- The default Uniwell Lynx database contains 8 Price Levels – more can be added if required
- You can give these Selling Price Levels meaningful Descriptions (eg. Customer Price, Happy Hour, Bistro, etc) by selecting ‘Price Levels’ from the Setup menu
 - Adjusting these Descriptions will modify labels throughout Uniwell Lynx so that you can easily identify what prices belong to each price level
 - Deleting Price Levels you don’t need will remove the related field from grids and screens within Uniwell Lynx, making the software easier to use



- Your POS terminals can have different Selling Price Levels mapped to the different ‘standard prices’ at the POS – go to the Data menu > Sales Terminals screen, select the ‘Other’ tab and adjust as required



FAQ: I’ve created a new Price Level, and want to copy all the prices from an existing Price Level to it – is that possible?

- Go to the Data menu > Calculate Selling Prices screen in Uniwell Lynx
- Select the price level you are copying from in “Base price for calculation”
- Select your new (destination) price level in “Sell price to update”
- Calculation percentage must be 0.00 and “Rounding method” set to ‘None’
- Press ‘Calculate Prices’ to verify the copy has been performed correctly, and when you are satisfied and want to commit to the changes, press ‘Update Prices’ at the bottom of the screen