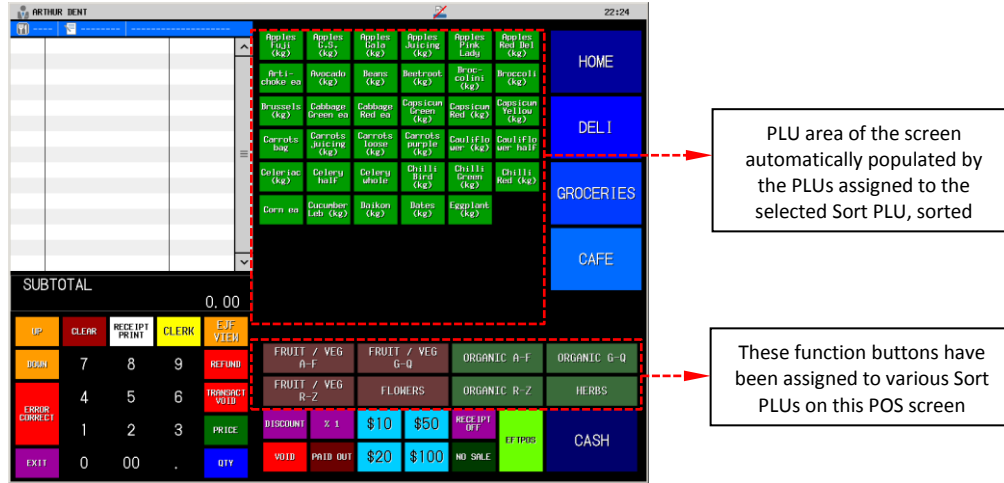


## Topic: **SORT PLU FUNCTION**

Sort PLUs are a screen-related function of Uniwell's AX/HX POS terminals. PLUs in the POS terminal can be assigned to 1 of up to 99 Sort PLUs in the POS so that when the Sort PLU button is pressed, PLUs assigned to that Sort PLU number will automatically be displayed in the PLU area of the POS screen. (See diagram below.)



FAQ: What are the benefits of using Sort PLUs?

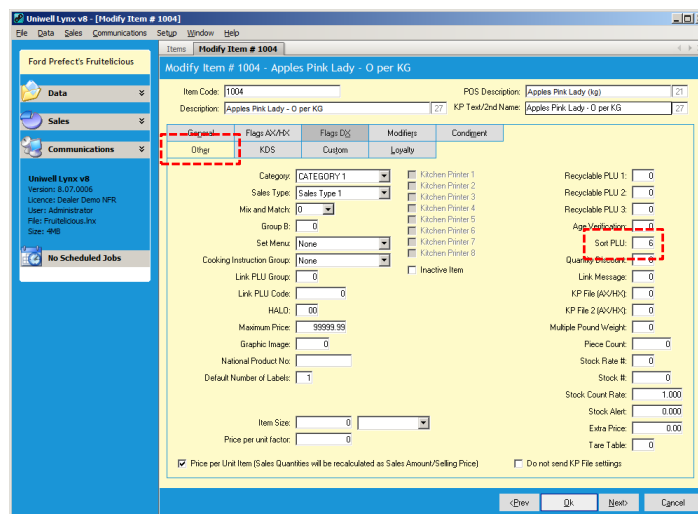
- An easy way to create a large array of related items on a POS touchscreen layout
- Alphabetical sorting makes searching for items within the menu easier for staff using the POS, particularly when the menu contents change regularly

FAQ: What are the technical limitations of Sort PLUs?

- The PLU area of the POS layout is not as flexible when using Sort PLUs (in comparison to PLU Pages) – button sizes and colours cannot be customised per item
- By default, all PLUs are assigned to Sort PLU 1. For this reason, some consider it easier not to use Sort PLU 1 on your POS screen, but start from Sort PLU 2

FAQ: How do I assign Items in Uniwell Lynx to a specific Sort PLU?

- Modify the Item (Data menu > Item screen) and select the 'Other' tab – change the entry in the 'Sort PLU' box to correspond with the desired Sort PLU function button on the POS screen layout
  - Note that a single PLU can only be associated with one Sort PLU button



FAQ: Now that the appropriate Items have been assigned to their correct Sort PLUs, how do I send this to the POS?

- Go to the Communications menu > Send Program, and send PLUs to the POS