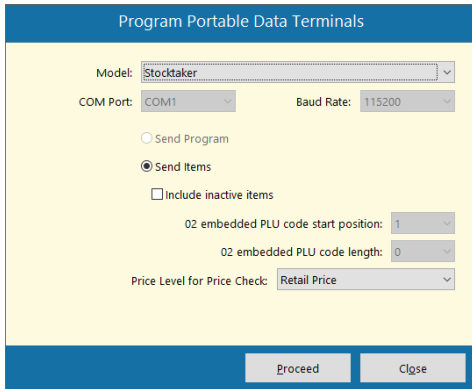


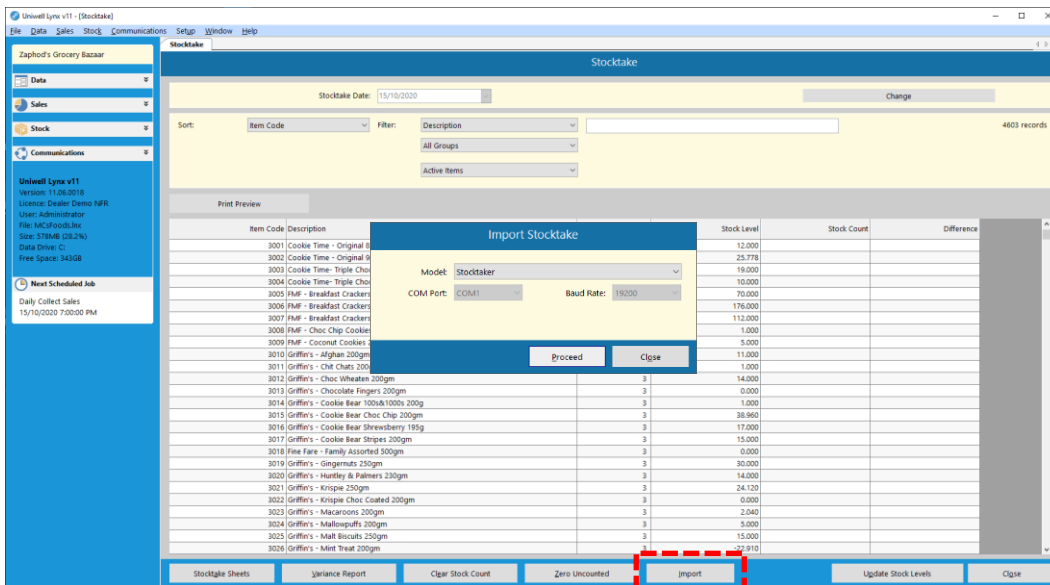
## Topic: PERFORMING A STOCKTAKE USING UNIWELL LYNX AND USTOCKTAKER

uStocktaker is a custom Android app designed to integrate with Uniwell Lynx for stocktaking and other stock control functionality. Initial set up and configuration of the Android PDT and uStocktaker will need to be performed by your Lynx Software support provider. *This tutorial assumes that you have a working connection between your PC and the PDT.*

1. Send updated stock items, barcodes & prices to the uStocktaker app (Setup menu > Program Portable Data Terminals)



2. **Perform the stock count** using uStocktaker (see tutorial 'Using uStocktaker')  
*Overview: Import Stock > perform the count > Export to PC*
3. After performing 'Export to PC' on uStocktaker, open the Stocktake screen in Uniwell Lynx (Stock menu > Stocktake), select the date that the stock count will be applied to (usually today's date) and **Import** the stock count



- Check that the stock count data has been correctly transferred across from uStocktaker to the Stock Count column of the Stocktake screen
  - **Note:** Uniwell Lynx appends the data of successive counts from uStocktaker into the current stocktake, so once you have imported the current count, you can continue using uStocktaker in another area & repeat the import process
4. Once you have finished using uStocktaker to complete the main stock count, continue with the stocktake process
    - Verify your stock count by checking variances. If count rechecks are required, manually adjust the Stock Count for specific items in question in the Stocktake grid (do not use uStocktaker to perform recounts)
    - Once you have verified that the Stock Count is accurate, you can print a Stocktake Variance Report for your records
    - Click on 'Update Stock Levels' to move the Stock Count across to the system's Stock Level and log variances in your stock transaction database

*For more information on performing and troubleshooting stocktakes in Uniwell Lynx, contact your support provider.*